



# Uckfield Millennium Green Newsletter December 2024



## Happy Christmas

A happy Christmas from the Green to all our Friends, volunteers, visitors and supporters.

This wintry view is from January this year.

The Green has had a great year with new volunteers joining the Maintenance Monday Team meaning the regular upkeep of the Green has been much more manageable.



The new ponds have now naturalised and are looking splendid. There was some further remedial work recently carried out on the lower pond, but this is now holding water and will come to life again in the Spring.

With the Wealden grant funding received in the Autumn the Trust has been able to renew the lower boardwalk with non-slip planks making it more accessible throughout the Winter. New sleeper bridges have been provided across the drainage ditches to provide access to other areas of the Green, and a new picnic bench has been provided in the Picnic & Play Area, located on the sunny side.

We have also carried on with tree planting this year with another forty trees planted to ensure the diversity and succession of native trees on the Green continues.

## Facebook / Instagram Posts

The following is a compilation of the posts since the September newsletter.

## Field Maple



One of the lovely hidden trees on the Green, just set back up the hill off Gordon's Walk. It is a very gnarled and spidery Field Maple which must have suffered damage in its early life to grow like this.



The Field Maple is the only true native maple in the UK, and normally puts on a spectacular show in Autumn when their leaves turn yellow and red. The wood is hard and strong, much like Oak, and has historically been used for furniture, musical instruments and tool handles.

## Work Party



A big thank you to the volunteers that helped with the work party today. Having three brushcutters meant we were able to clear far more of the path verges than we expected to, a really good morning's work.

The homemade apple crumble muffins were an extra surprise treat.



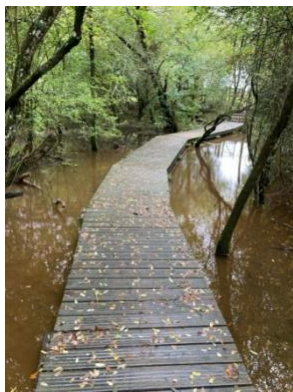
## Hornbeam Avenue in Autumn

This is one of our favourite views, along Hornbeam Avenue on the southern boundary path.

The dappled sunlight through the old hornbeam boundary trees gives a lovely autumnal vibe, which will get even better as the leaves turn a golden yellow and orange with some staying on the tree throughout the winter.



## Water on the Green



With all the recent rain, the streams and ponds on the Green are in full flow.

The wetland areas around the boardwalks are looking very picturesque, it's all very calming.



## Winter Projects

The first of our autumn/winter projects is the replacement of the boardwalk planks with a non-slip type to ensure the main path can be used safely throughout the year. 150 planks were delivered on Monday and 45 installed this week by the Maintenance Monday (& Tuesday) team. We apologised to the fungi that were disturbed during the process!



## The Southern Pit



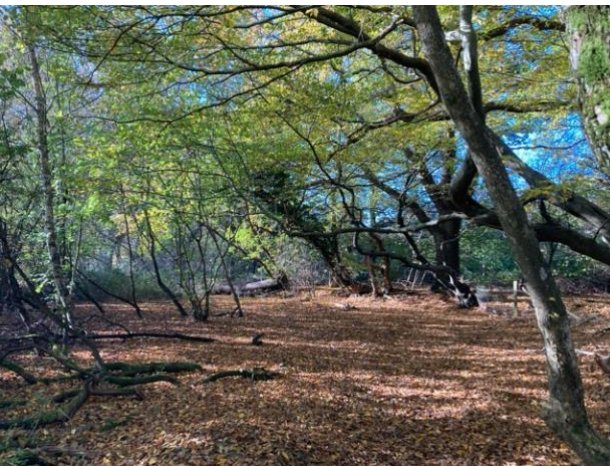
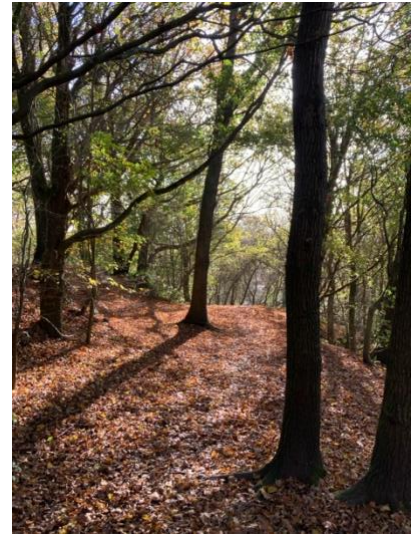
The southern clay pit is always colourful this time of year with the golden shades of the young trees that are naturalising this wetland area.

The large veteran oak makes a great backdrop.

## Sunny Autumn Days



A lovely sunny autumn day always lifts the spirit and with the carpet of crisp fallen leaves, it's been wonderful walking the Green this week.



## Pond Restoration

One of the ponds created two years ago for Great Crested Newt conservation was not holding water, a problem of forming it in an old working clay pit which had numerous land drains! The excavator returned last week and we now have a full pond, hopefully this will entice the newts out of their overwintering hibernation in early spring.



## Tree Planting



Despite the best endeavours of Storm Darragh a number of people braved the wind & rain and the tree planting went ahead.

A big thank you to everyone involved, we hope you enjoy watching your trees grow.



The rabbits and deer seem to be appreciating the trees planted last year so we'll make sure that wire tree guards give the new trees the best possible chance to grow.



## New Picnic Bench

There is now a new picnic bench in the picnic and play area, located on the sunny side. It was tested immediately after installation with some tea and mince pies.



For further information, please contact us at:

[info@uckfieldmillenniumgreen.co.uk](mailto:info@uckfieldmillenniumgreen.co.uk)  
[www.uckfieldmillenniumgreen.co.uk](http://www.uckfieldmillenniumgreen.co.uk)

